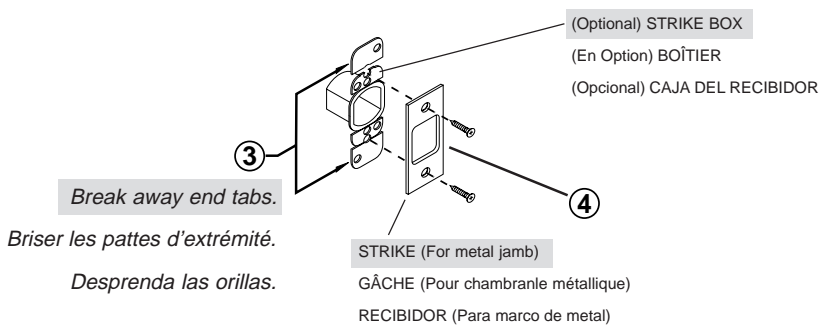
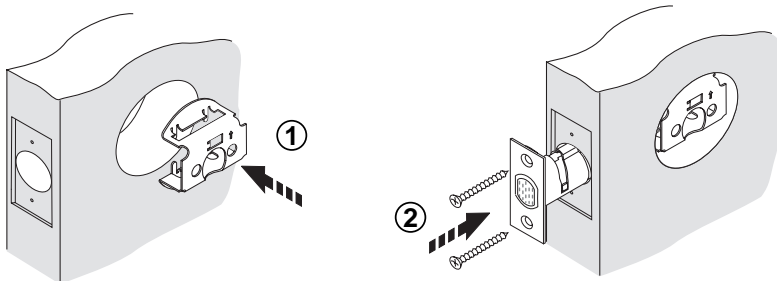
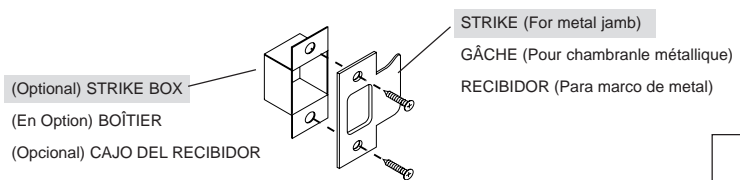


<p>ADDITIONAL INSTRUCTIONS FOR UL/ULC APPLICATIONS & METAL JAMB</p>	<p>INSTRUCTIONS ADDITIONNELLES POUR APPLICATIONS UL/ULC ET CHAMBRANLE MÉTALLIQUES</p>	<p>INSTRUCCIONES ADICIONALES PARA APLICACIONES UL/ULC Y MARCOS DE METAL</p>
--	--	--

<p>FOR DEADBOLTS</p>	<p>POUR PÉNE DORMANTS</p>	<p>PARA CERROJOS</p>
<p><i>For UL/ULC application ONLY, follow sequence 1 — 4.</i></p>	<p><i>Pour les applications UL/ULC SEULEMENT, observer la séquence 1 — 4.</i></p>	<p><i>Para aplicaciones UL/ULC SOLAMENTE, siga la séquence 1 — 4.</i></p>



<p>FOR KNOBS & LEVERS</p>	<p>POUR BOUTONS ET LEVIERS</p>	<p>PARA PERILLAS Y MANIJAS</p>
<p><i>For UL/ULC application ONLY, install UL/ULC strike and strike box.</i></p>	<p><i>Pour les applications UL/ULC SEULEMENT, installer UL/ULC gâche et boîtier de gâche.</i></p>	<p><i>Para aplicaciones UL/ULC SOLAMENTE, instale recibidor y caja del recibidor.</i></p>



**UL FLYER
23643/01**