



## Welcome to the Kwikset family!

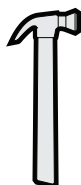
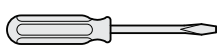
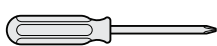
This guide will get you ready to install your handleset.

If you have any issues, please visit our support center: [kwikset.com/support](http://kwikset.com/support) or call us at 1-800-327-5625.

## Installation and Reference Guide

**This manual can be used to install a variety of handlesets.**

### Recommended Tools



wood block



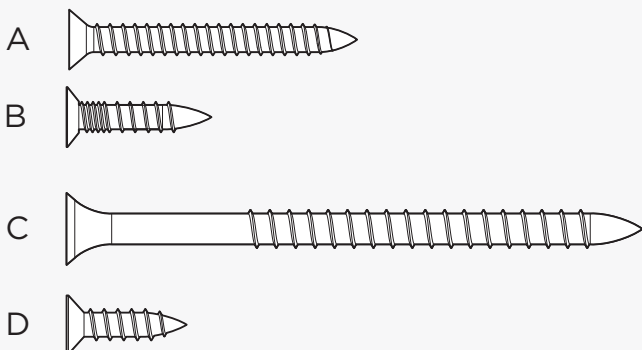
\*Tools will depend on install type

**Door Prep:** If you need help in preparing your door

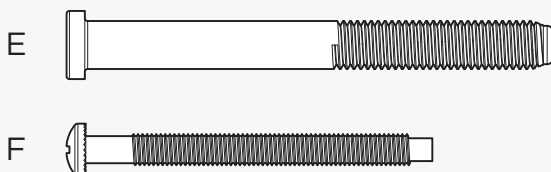
**Drilling Instructions:** If you need help in drilling your door

## Screw Reference

### Latches and Strikes



### Deadbolt and Handleset

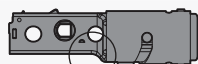


### Levers and Knobs



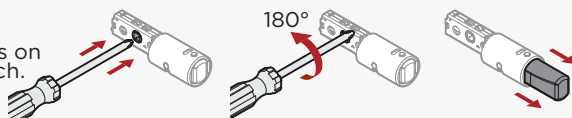


## 1 Extend top latch bolt



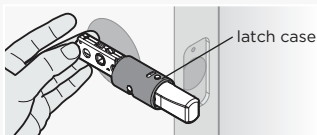
Make sure the curve is on the bottom of the latch.

Use a screwdriver to extend the latch bolt.

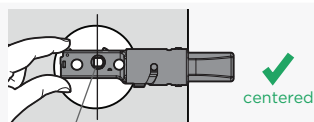


## 2 Adjust backset of the top latch (if needed)

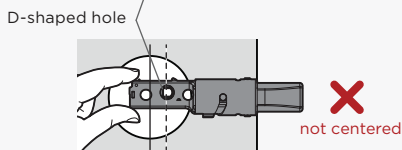
- A Hold the latch in front of the door hole, with the latch case flush against the door edge.



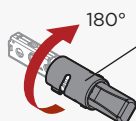
- B If the D-shaped hole is centered in the door hole, no adjustment is required. Proceed to step 3.



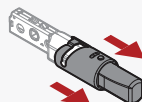
If the D-shaped hole is NOT centered, adjust latch. See "Latch Adjustment" (step 2C).



- C Latch Adjustment (only if needed)

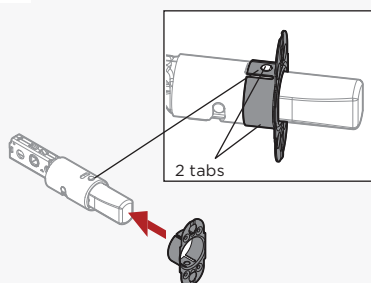


Rotate the front of the latch to extend it.

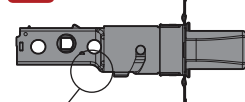


## 3 Install top latch

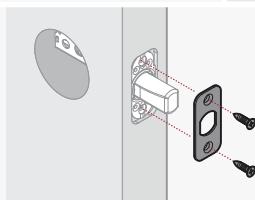
- A Install backplate.



- B Install latch in the top hole



- C



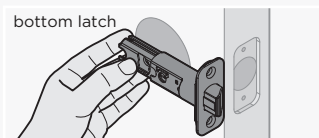
Install faceplate and secure with screws

B (x2)

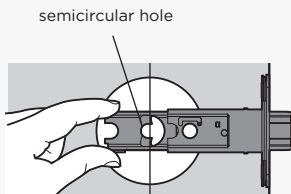


## 4 Adjust backset of the bottom latch (if needed)

- A Hold the latch in front of the door hole, with the latch face flush against the door edge.

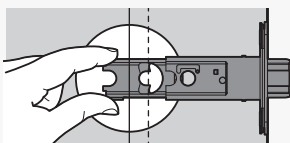


- B If the semicircular hole is centered in the door hole, no adjustment is required. Proceed to step 5.



✓  
centered

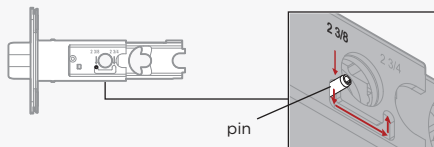
- If the semicircular hole is NOT centered, adjust latch. See "Latch Adjustment" (step 4C).



✗  
not centered

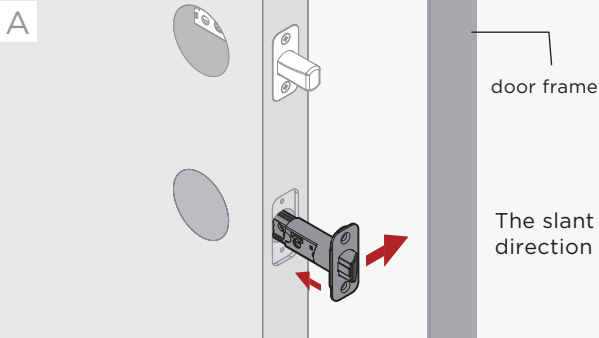
- C Latch Adjustment (if needed)

Grasp the pin on both sides of the latch and move it to the longer setting.

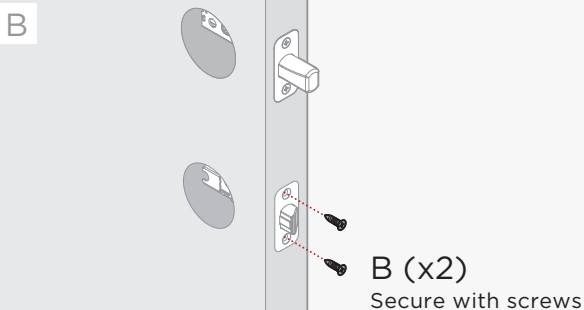


pin

## 5 Install bottom latch

- A
- 
- door frame

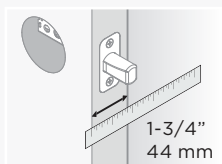
The slant of bolt faces the direction the door closes.

- B
- 
- B (x2)  
Secure with screws

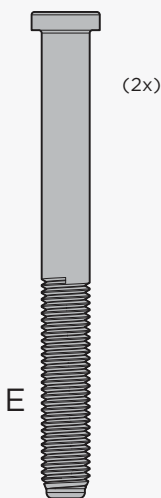
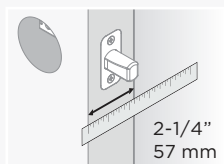


## 6 Determine deadbolt mounting screws

Measure the thickness of your door to determine the required mounting screws for step 7.



or

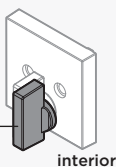


Call Kwikset to order a service kit for 2-1/4" (57 mm) thick doors. Use the screws provided in the kit.

## 7 Install deadbolt

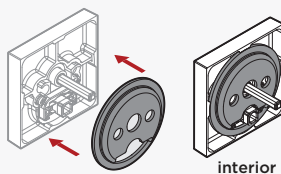
A

Make sure the interior turnpiece is vertical



B

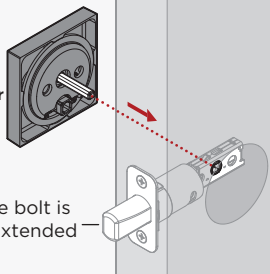
Ensure mounting plate is pre-installed.



C

interior

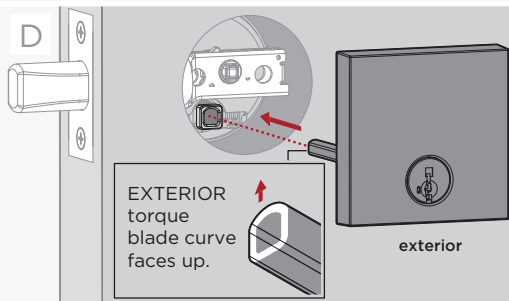
Ensure bolt is fully extended



D

EXTERIOR torque blade curve faces up.

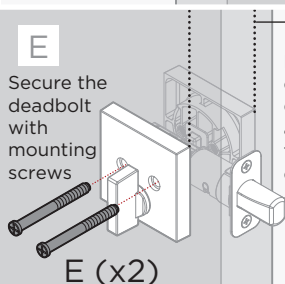
exterior



E

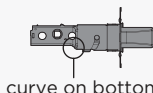
Secure the deadbolt with mounting screws

Ensure edges of deadbolt are parallel to the door edge



### Troubleshooting

If the screws are difficult to tighten, make sure the latch is installed correctly



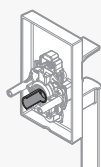
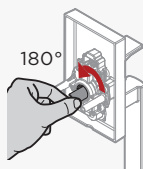
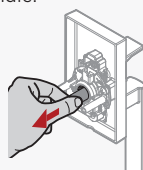
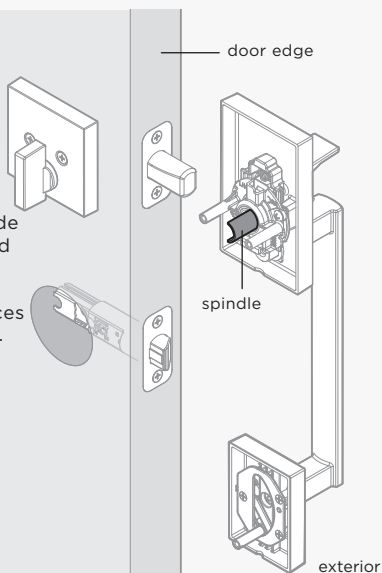
If the turnpiece does not rotate, make sure its vertical, the latch bolt is extended, and the curve of the exterior torque blade faces up.

## 8 Install handleset

**!** If adjustment is required, pull and rotate spindle.

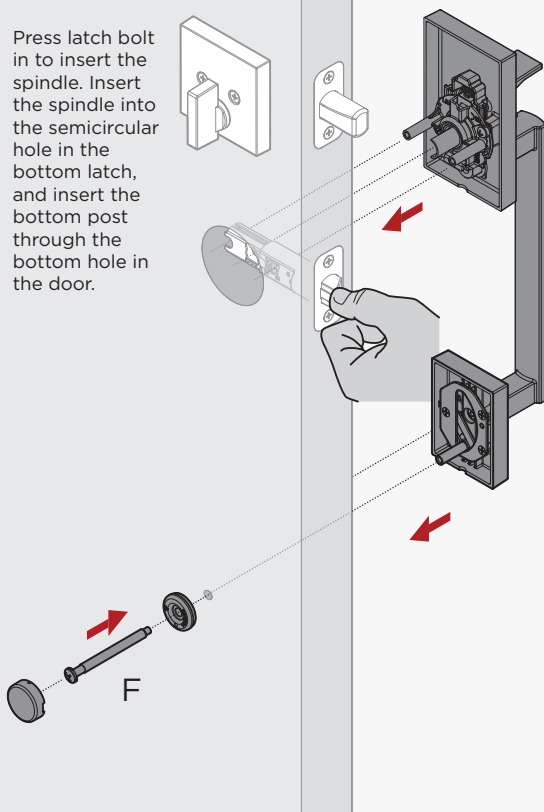
A

Hold the handleset on the exterior side of the door and make sure the round edge of the spindle faces the door edge.

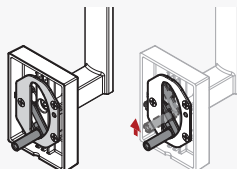


B

Press latch bolt in to insert the spindle. Insert the spindle into the semicircular hole in the bottom latch, and insert the bottom post through the bottom hole in the door.



**!** Post is adjustable and can be moved to any position within the slot.

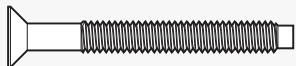


Pre-drilling is required. See drilling instructions if no pre-drilled holes exist.

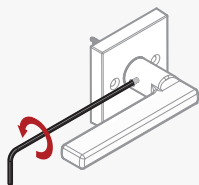


## 9 Install lever or knob

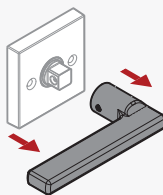
G



A



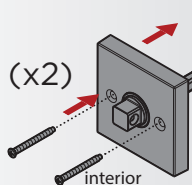
loosen pre-installed set screws



B

Install  
lever/knob  
base

G (x2)



C

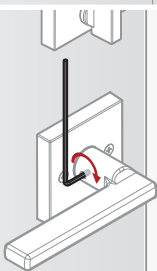
Install lever/knob

lever handle  
faces away  
from door edge



D

Tighten the  
pre-installed  
set screws  
(if applicable)



## 10 Install strike on door frame

A

⚠ Make sure hole  
in door frame is  
drilled a minimum  
of 1" (25 mm)  
deep.

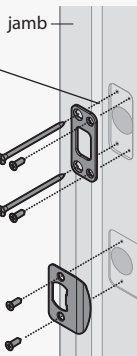
C (x2)

D (x2)

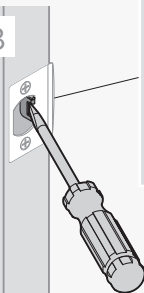
Longer screws install  
closest to jamb.

Note: The longer screws, 3"  
(76 mm) must be used to  
maintain highest security.

A (x2)



B



Close door and test  
handleset operation.  
If latch is loose in the  
strike, adjust the  
strike tab so it grips  
the latch better when  
the door is closed.

# SmartKey Rekeying Instructions



**SMARTKEY  
SECURITY™**

## ONE KEY FOR ALL YOUR LOCKS™

The lock you can  
re-key yourself in  
seconds for any  
situation, including:

Easily re-key  
yourself

Reset tool  
goes here



WITH PROTECTION AGAINST  
ADVANCED BREAK-IN TECHNIQUES



**Recently  
Moved**



**Lost  
Keys**



**Multiple  
Doors**



**Carry  
Less Keys**

For rekeying instructions, you can also visit:

<https://www.kwikset.com/support/answers/how-to-re-key-your-smartkey-security-locks>

If you have any issues, please visit our  
support center: [kwikset.com/support](https://www.kwikset.com/support)  
or call us at 1-800-327-5625.



**WARNING:** This Manufacturer advises that no lock can provide complete security by itself. This lock may be defeated by forcible or technical means, or evaded by entry elsewhere on the property. No lock can substitute for caution, awareness of your environment, and common sense. Builder's hardware is available in multiple performance grades to suit the application. In order to enhance security and reduce risk, you should consult a qualified locksmith or other security professional.