



Welcome to the Kwikset family!

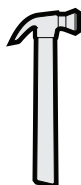
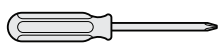
This guide will get you ready to install your handleset.

If you have any issues, please visit our support center: kwikset.com/support or call us at 1-800-327-5625.

Installation and Reference Guide

This manual can be used to install a variety of handlesets.

Recommended Tools



wood block



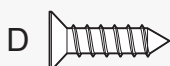
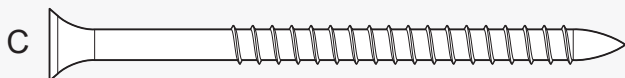
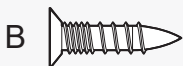
*Tools will depend on install type

[Door Prep: If you need help in preparing your door](#)

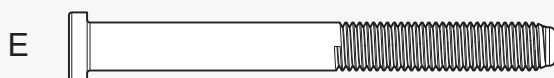
[Drilling Instructions: If you need help in drilling your door](#)

Screw Reference

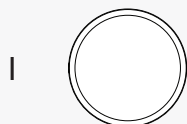
Latches and Strikes



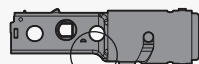
Interior Trim



Handleset

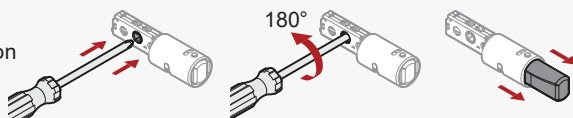


1 Extend latch bolt



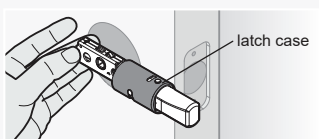
Make sure the curve is on the bottom of the latch.

Use a screwdriver to extend the latch bolt.

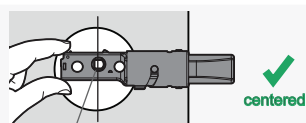


2 Adjust backset of the latch (if needed)

- A** Hold the latch in front of the door hole, with the latch case flush against the door edge.

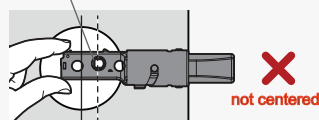


- B** If the D-shaped hole is centered in the door hole, no adjustment is required. Proceed to step 3.

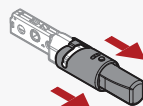
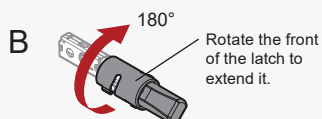


If the D-shaped hole is NOT centered, adjust latch. See "Latch Adjustment" (step C).

D-shaped hole



- C** Latch Adjustment (only if needed)

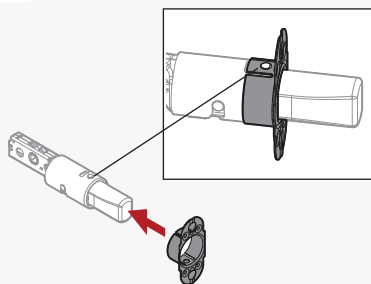


3 Install top latch (chiseled door)

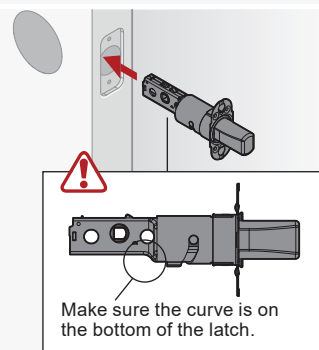
A



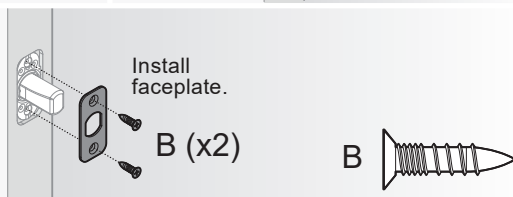
- B** Install backplate.



C



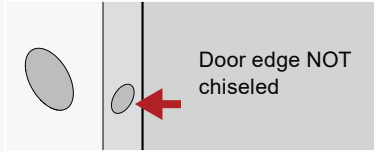
D



3

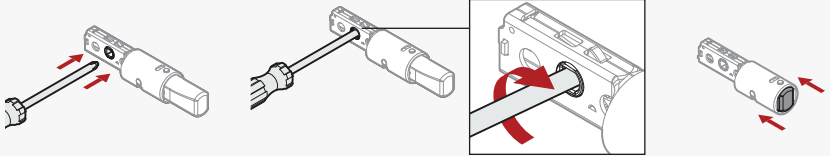
Install top latch (non-chiseled door)

A



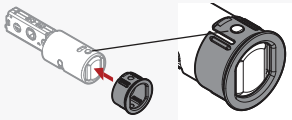
B

Use a screwdriver to retract the latch bolt.

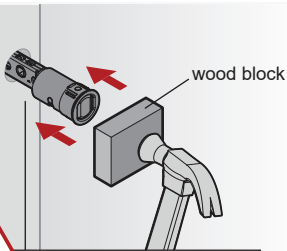


C

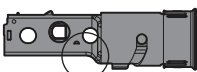
Install drive-in collar.



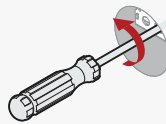
D



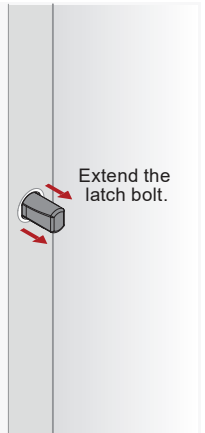
Make sure the curve is on the bottom of the latch.



E



Extend the latch bolt.



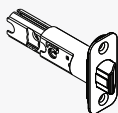
4 Prepare bottom latch



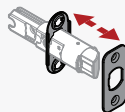
or



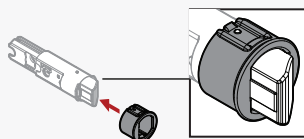
Proceed to step 5.



Remove the backplate and rectangular faceplate.

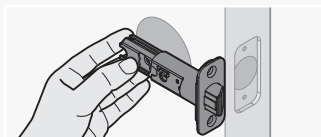


Install the drive-in collar.



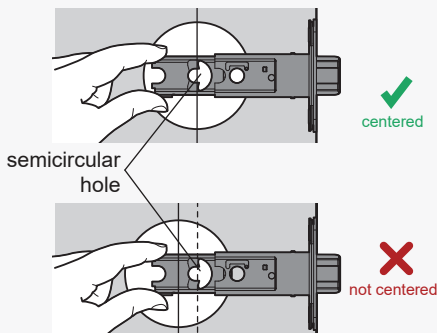
5 Adjust backset of the bottom latch (if needed)

- A Hold the latch in front of the door hole, with the latch face flush against the door edge.



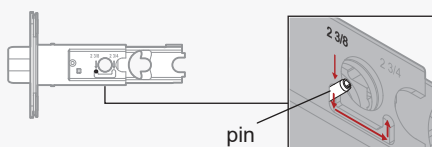
- B If the semicircular hole is centered in the door hole, no adjustment is required. Proceed to step 6.

If the semicircular hole is NOT centered, adjust latch. See "Latch Adjustment" (step 5C).



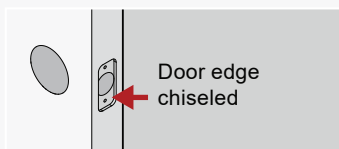
- C Latch Adjustment (if needed)

Grasp the pin on both sides of the latch and move it to the longer setting.

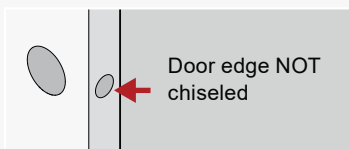


6

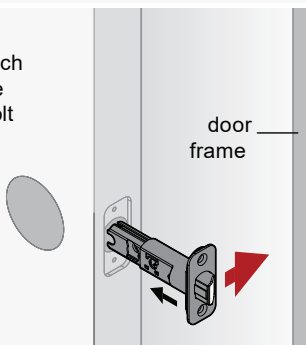
Install bottom latch



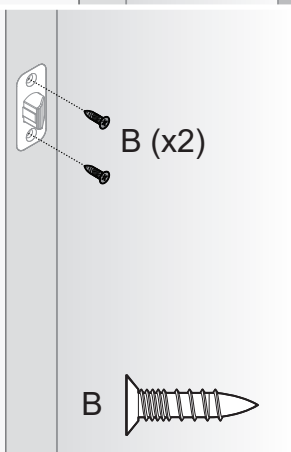
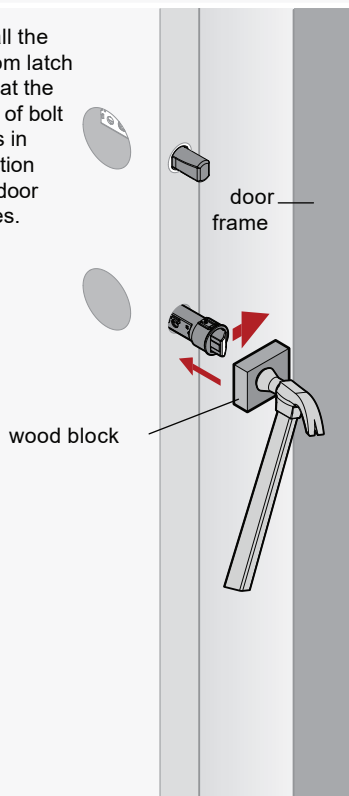
or



Install the
bottom latch
so that the
slant of bolt
faces in
direction
that door
closes.



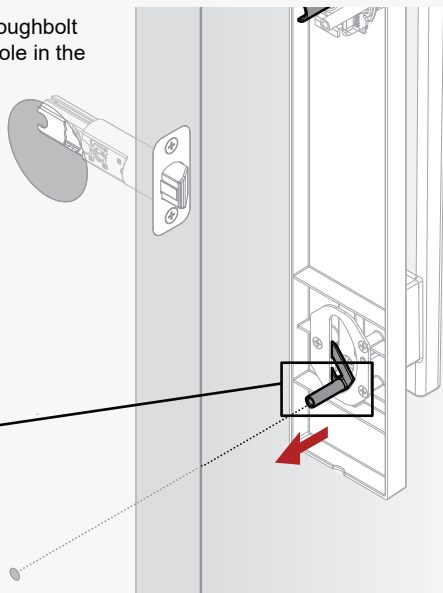
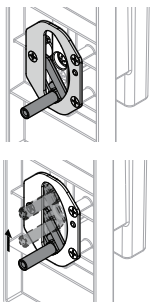
Install the
bottom latch
so that the
slant of bolt
faces in
direction
that door
closes.



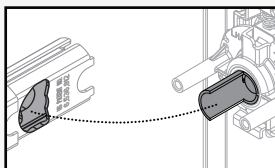
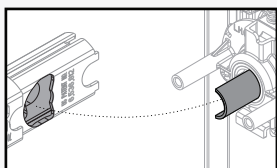
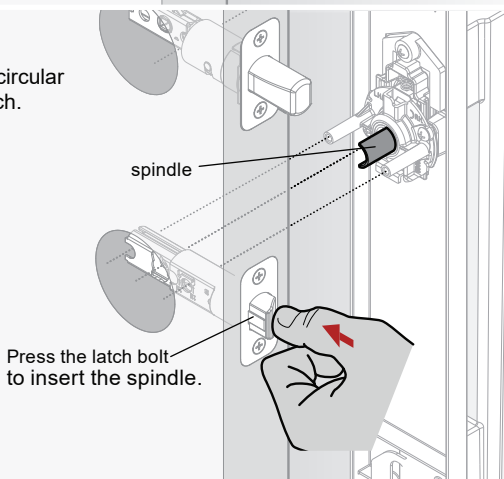
7 Install handleset

- A** Insert the adjustable throughbolt **THROUGH** the bottom hole in the door.

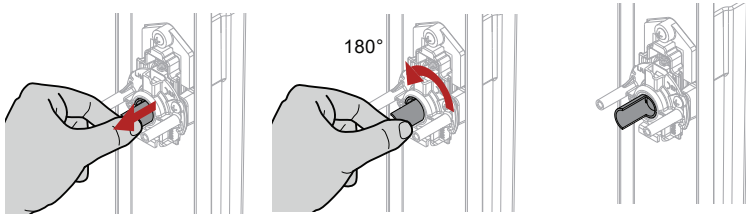
Post is adjustable and can be moved to any position within the slot.



- B** Insert the spindle **THROUGH** the semicircular hole in the bottom latch.



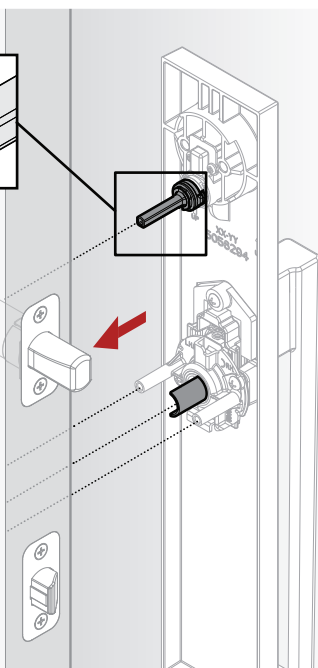
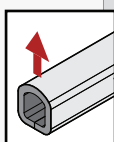
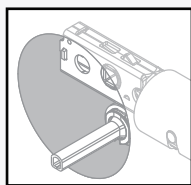
If adjustment is required, pull and rotate the spindle.



C



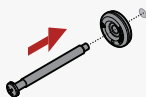
EXTERIOR torque blade
curve faces up and goes
UNDER the latch.



8 Secure the handleset

A

Secure the handleset with the
washer and screw.

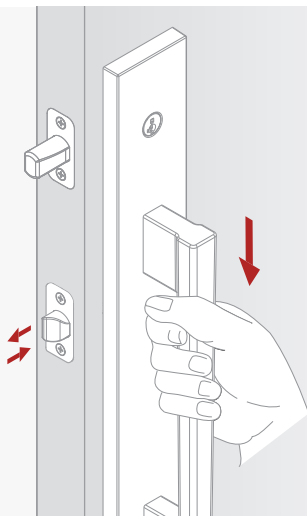


H



B

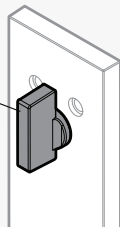
Pull down on the exterior handle to test the bottom latch. If the bottom latch retracts and extends with ease, proceed to step 9, if not go back to step 7B and confirm handing is correct.

**9**

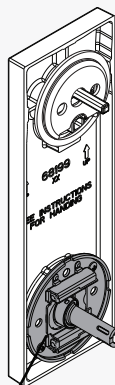
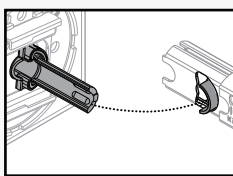
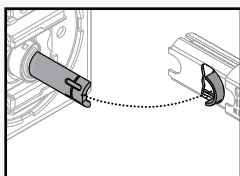
Install interior assembly

A

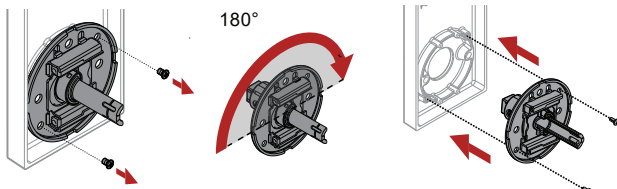
Make sure the interior turnpiece is vertical.

**B**

Adjust interior handing (if required).



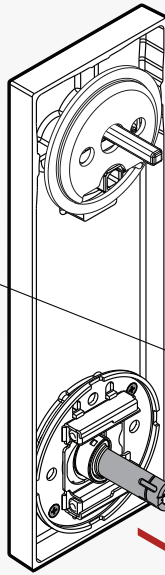
If handing adjustment is required, remove and rotate the chassis.



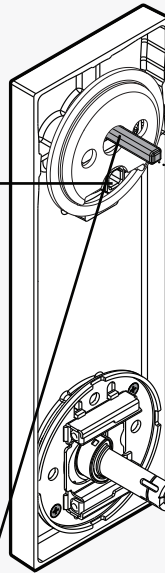
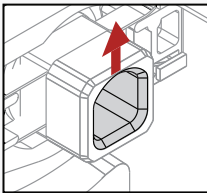
C Install spindle of the interior assembly.



Make sure latch bolt is fully extended.



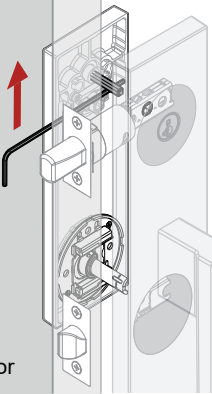
D Install the torque blade in the interior assembly.



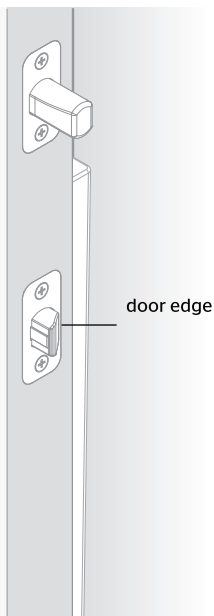
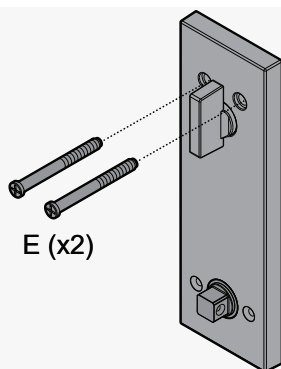
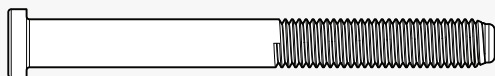
Torque blade

D-shaped hole

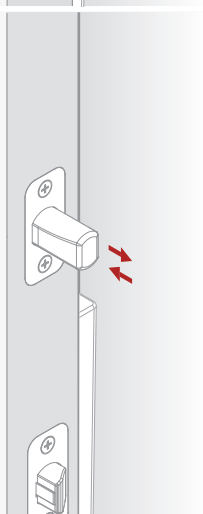
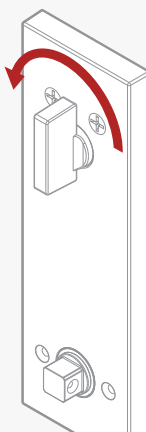
Use the allen wrench to lift the torque blade to guide it through the D-shaped hole.



Interior

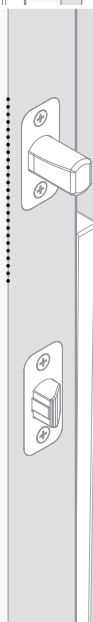
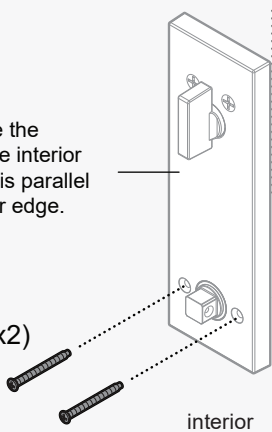
E**E****F**

Turn the turnpiece to test the top latch. If the turnpiece does not rotate, make sure the turnpiece is vertical, the latch bolt is extended, and the curve of the exterior torque blade faces up.

**G**

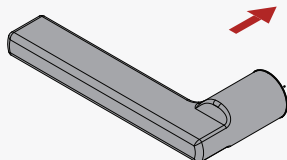
Secure the interior assembly with lower mounting screws.

Make sure the edge of the interior assembly is parallel to the door edge.

F (x2)**F**

H Install lever.

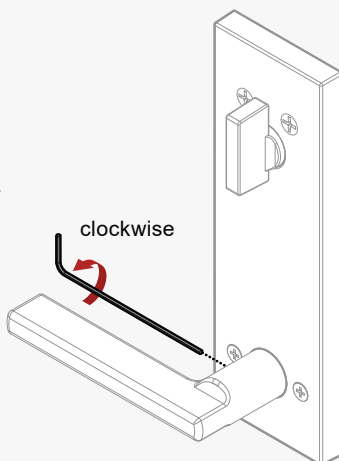
Lever handle faces away from the door edge.



I Tighten the pre-installed set screw.

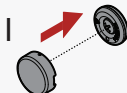
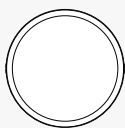
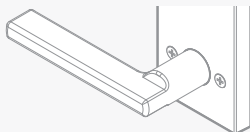


Fully tighten the set screw using the long end of the Allen wrench.



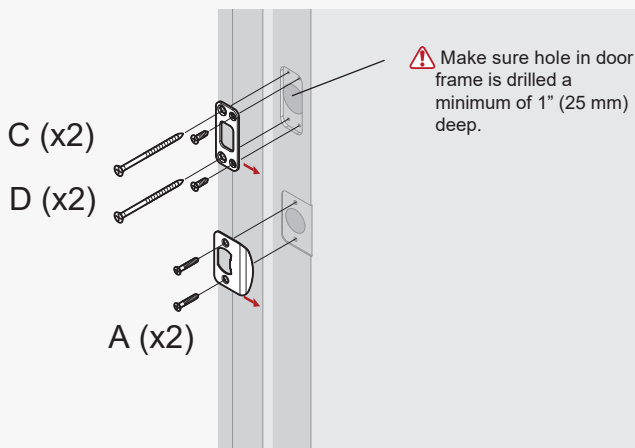
10 Secure the handset

I Fully tighten the screw and snap on the screw cover.



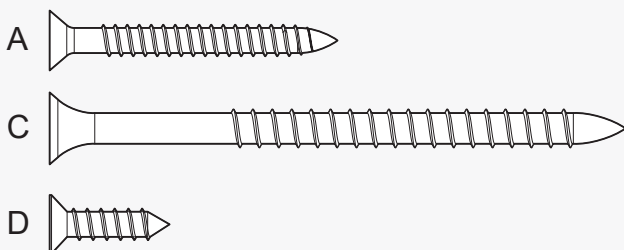
11 Install strike on door frame

A

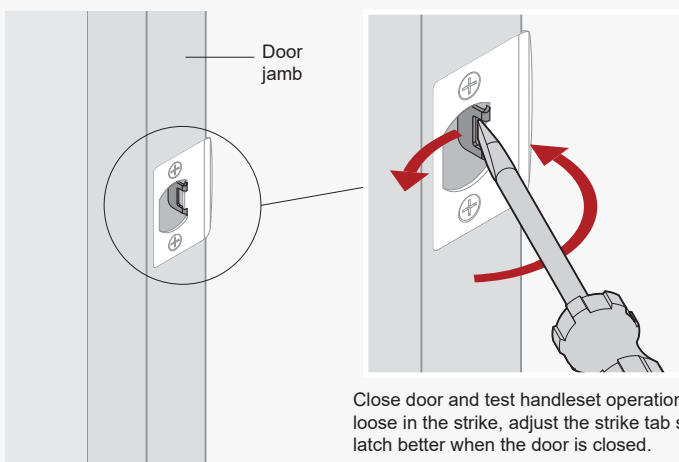


Longer screws install closest to jamb.

The longer screws, 3" (76 mm) must be used to maintain highest security.



B



SmartKey Rekeying Instructions



**SMARTKEY
SECURITY™**

ONE KEY FOR ALL YOUR LOCKS™

Easily re-key
yourself

Reset tool
goes here



WITH PROTECTION AGAINST
ADVANCED BREAK-IN TECHNIQUES

The lock you can
re-key yourself in
seconds for any
situation, including:



**Recently
Moved**



**Lost
Keys**



**Multiple
Doors**



**Carry
Less Keys**

For rekeying instructions, you can also visit:

<https://www.kwikset.com/support/answers/how-to-re-key-your-smartkey-security-locks>

If you have any issues, please visit our
support center: [kwikset.com/support](https://www.kwikset.com/support)
or call us at 1-800-327-5625.



WARNING: This Manufacturer advises that no lock can provide complete security by itself. This lock may be defeated by forcible or technical means, or evaded by entry elsewhere on the property. No lock can substitute for caution, awareness of your environment, and common sense. Builder's hardware is available in multiple performance grades to suit the application. In order to enhance security and reduce risk, you should consult a qualified locksmith or other security professional.