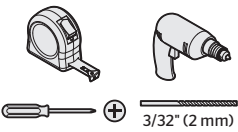
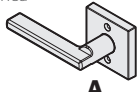


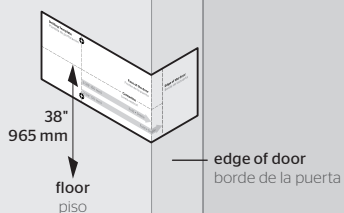


| <b>Required tools</b><br>Herramientas necesarias   | <b>Parts in the box</b><br>Piezas en la caja   |   |   |
|--|--|---|---|
|  <p>3/32" (2 mm)</p> | <b>Lever</b><br>Palanca<br><br><b>A</b> | <b>Allen wrench</b><br>Llave Allen<br><br><b>B</b> | <b>Screws</b><br>Tornillos<br><br><b>C</b> |

# 1 Prepare door Prepare la puerta

**A Cut out template and fold along fold line for desired backset. Place fold line on edge of door with centerline 38" (965 mm) from floor.**

Recorte la plantilla y dóblela a lo largo del doblez con la distancia al centro deseada. Coloque el doblez a lo largo del borde de la puerta con la línea central a unos 38" (965mm) del suelo.

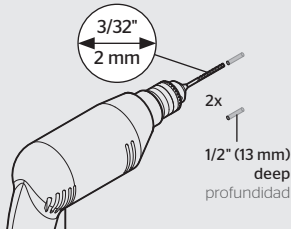


**B Mark holes**  
Marque los orificios



2x

**C Drill holes**  
Perfore los orificios



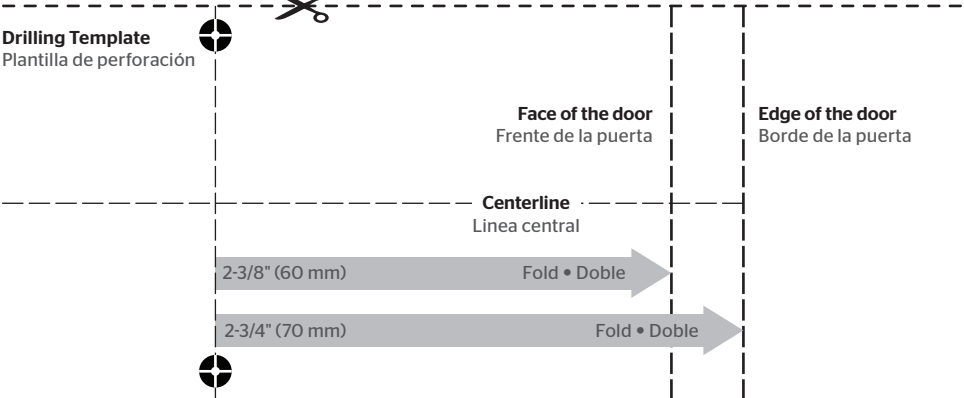
3/32" 2 mm

2x

1/2" (13 mm) deep profundidad

Instructions continue on reverse  
Las instrucciones continúan en el reverso de la hoja

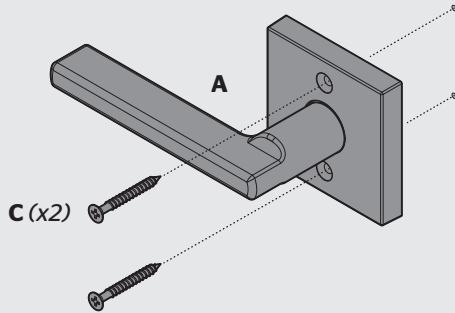
Drilling Template  
Plantilla de perforación



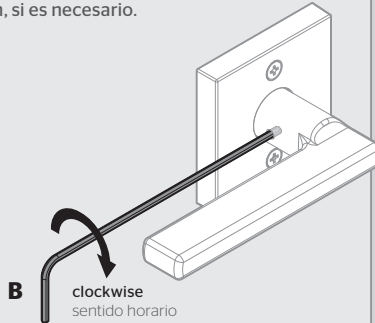
## 2

### Install lever Instale la palanca

- A** Install lever.  
Instale la palanca.



- B** Tighten set screw, if necessary.  
Ajuste el tornillo de fijación, si es necesario.



©2018 Spectrum Brands, Inc.

Register your product at [www.kwikset.com/productregistration](http://www.kwikset.com/productregistration)  
Rate your product at [www.kwikset.com/reviews](http://www.kwikset.com/reviews)

Registre su producto en [www.kwikset.com/productregistration](http://www.kwikset.com/productregistration)  
Clasifique su producto en [www.kwikset.com/reviews](http://www.kwikset.com/reviews)

**Drilling Template**  
Plantilla de perforación

**Edge of the door**  
Borde de la puerta

**Face of the door**  
Frente de la puerta

**Centerline**  
Línea central

Fold • Doble 2-3/8" (60 mm)

Fold • Doble 2-3/4" (70 mm)

